

INSTALLATION MySQL community server

Follow to link:

<https://dev.mysql.com/downloads/windows/installer/8.0.html>

- a. Download Windows (x86, 32-bit), MSI Installer and run “mysql-installer-community-8.0.18.0.msi”.

MySQL Community Downloads

MySQL Installer


General Availability (GA) Releases

MySQL Installer 8.0.18

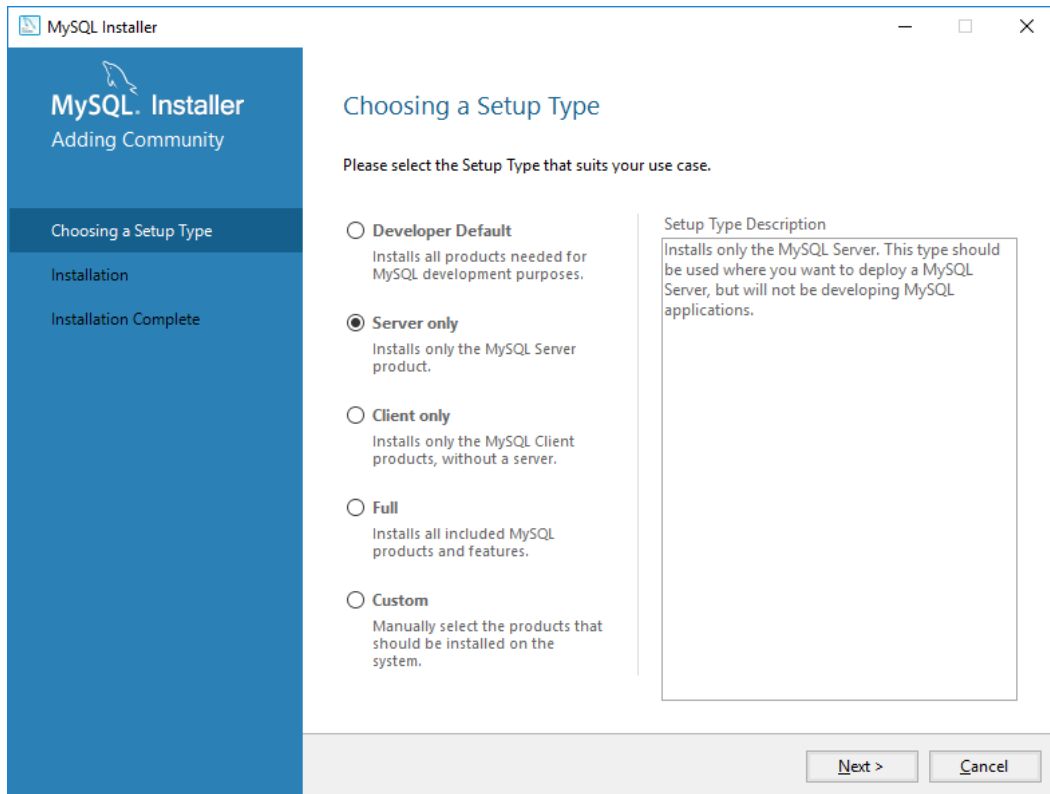
Select Operating System:
Microsoft Windows

[Looking for previous GA versions?](#)

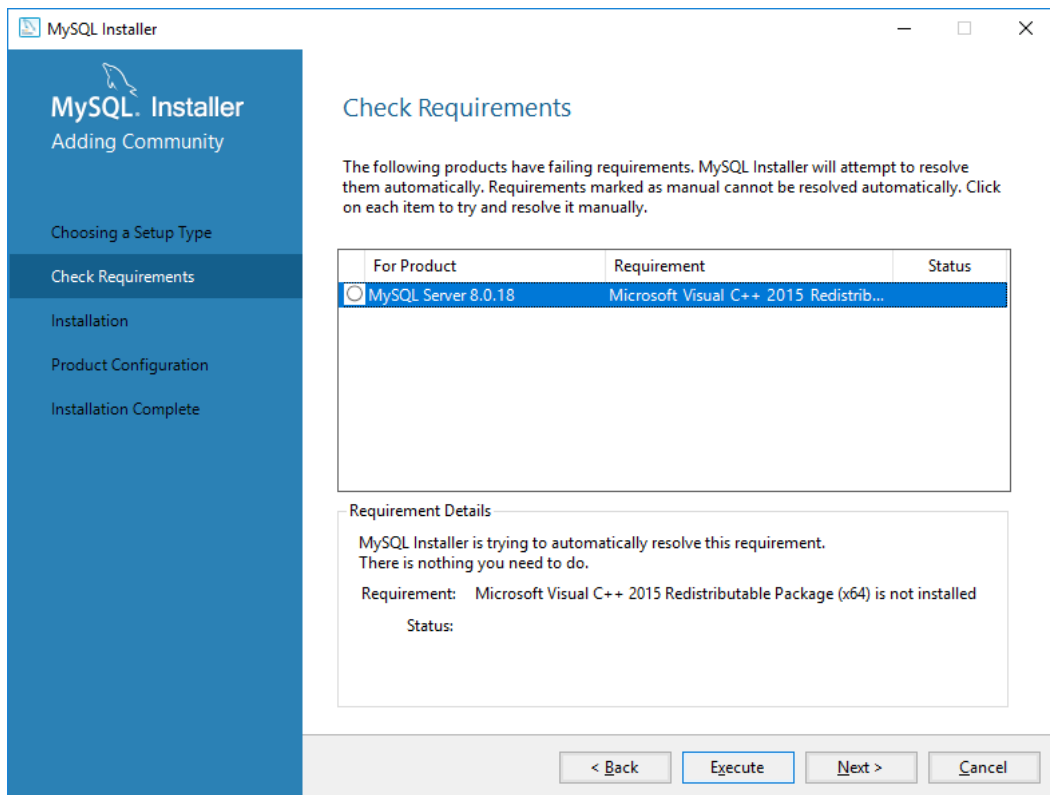
Windows (x86, 32-bit), MSI Installer (mysql-installer-web-community-8.0.18.0.msi)	8.0.18	18.6M	Download
Windows (x86, 32-bit), MSI Installer (mysql-installer-community-8.0.18.0.msi)	8.0.18	415.1M	Download

 We suggest that you use the MD5 checksums and GnuPG signatures to verify the integrity of the packages you download.

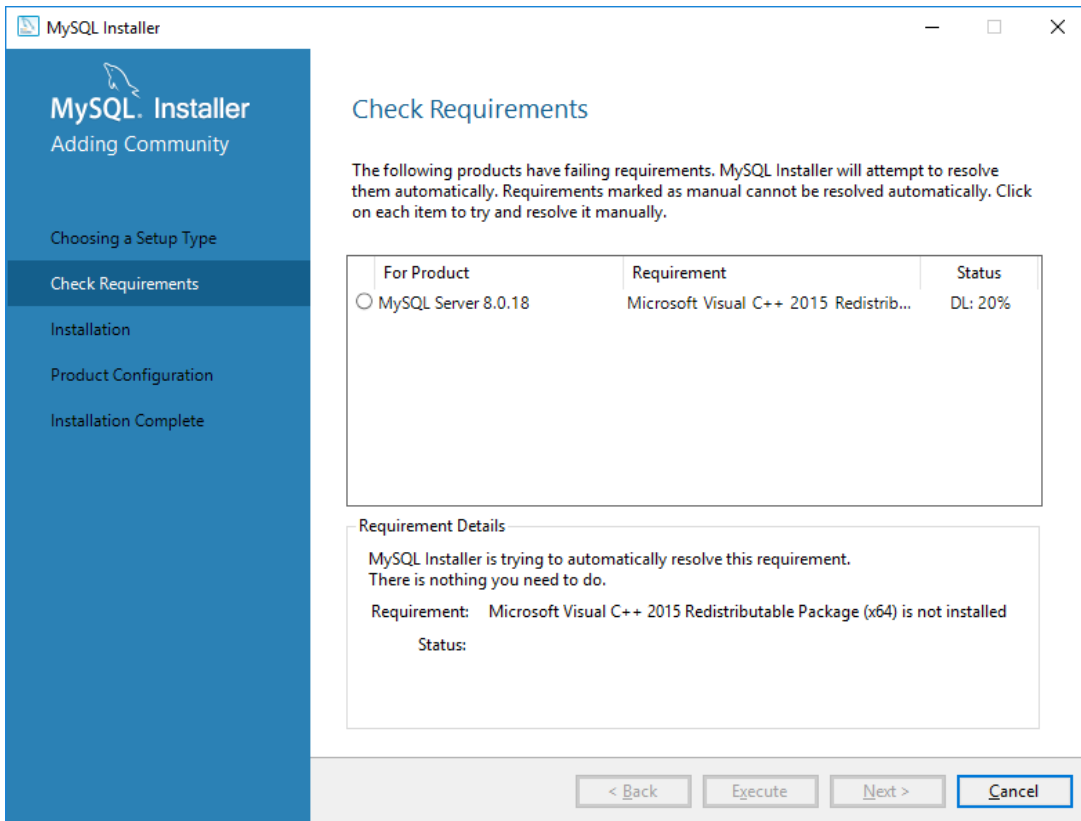
b. Select “Server only” and click “Next”.



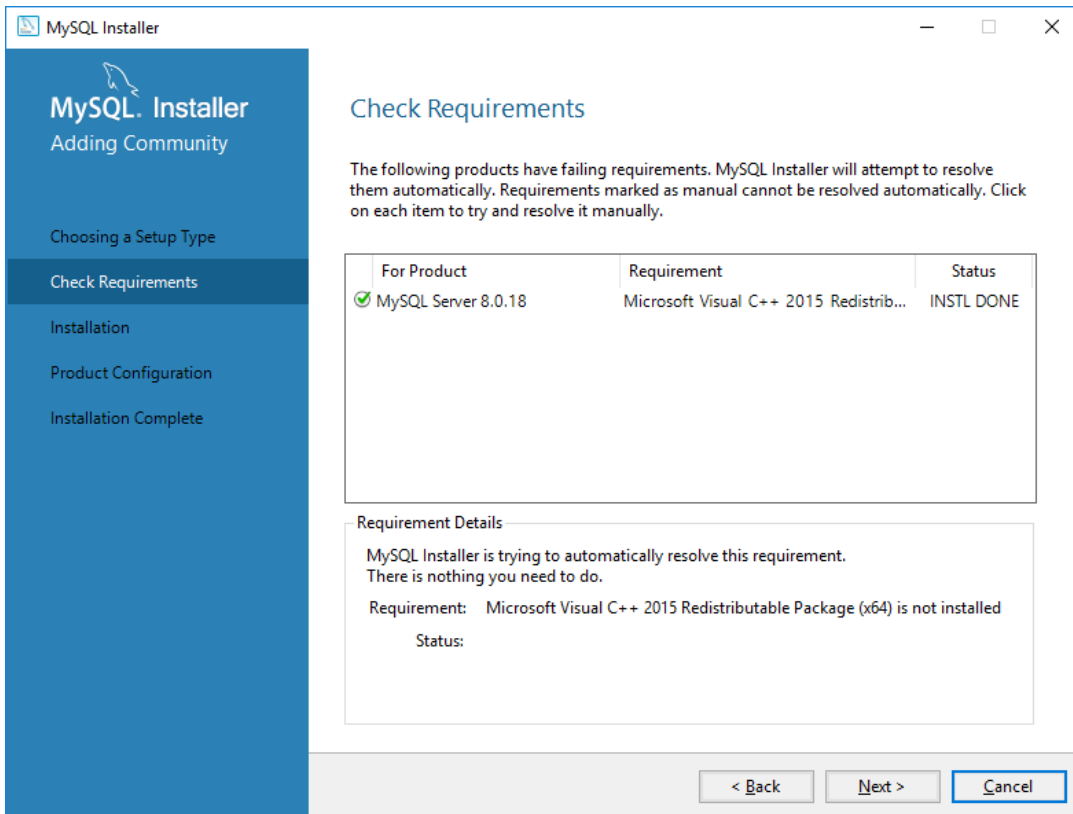
c. Select Microsoft Visual C++ and click “Execute”.



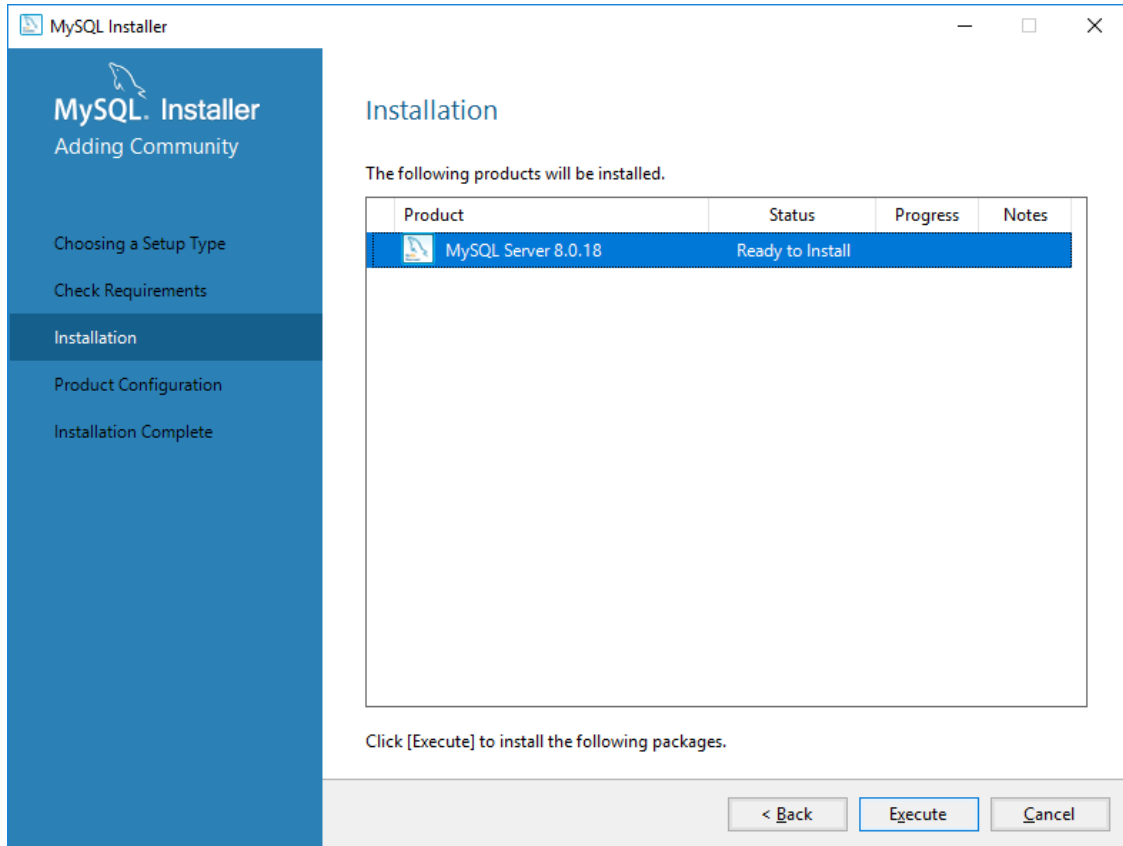
d. Then MySQL installer download and install Microsoft Visual C++ distributive.



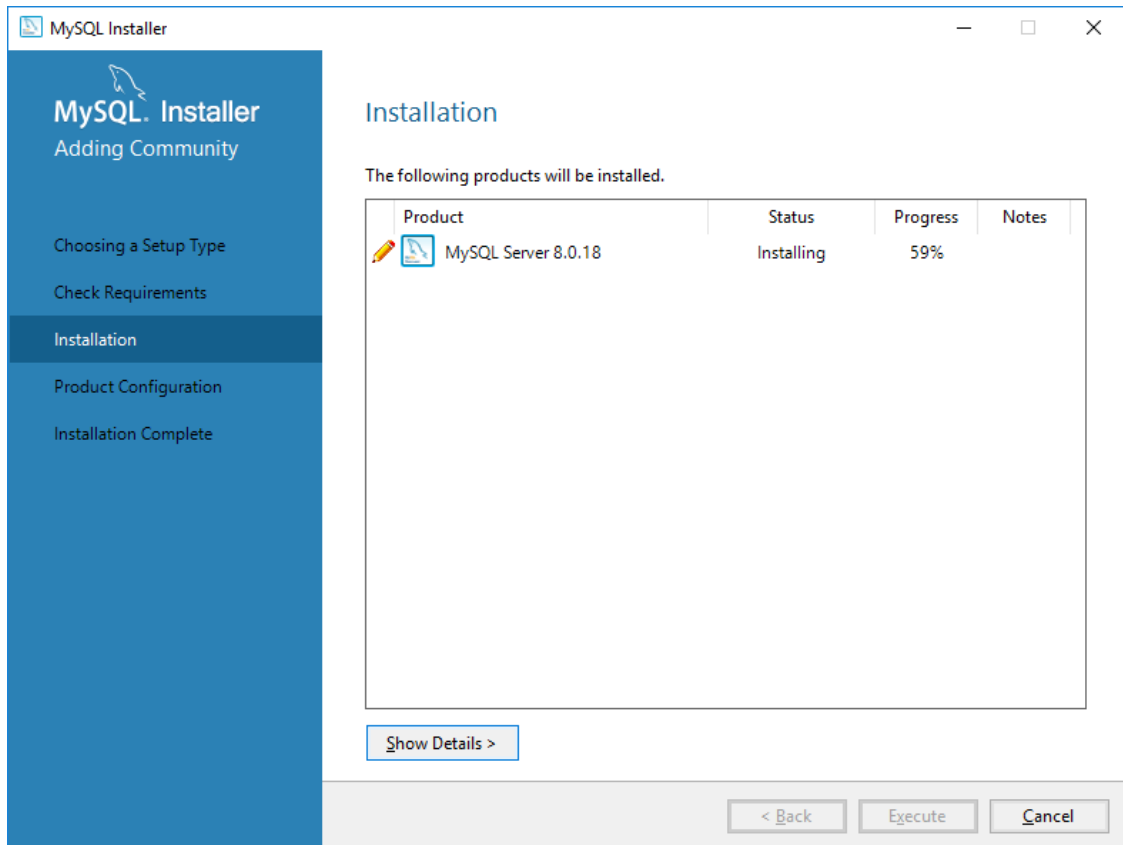
e. Installation Microsoft Visual C++ completed.



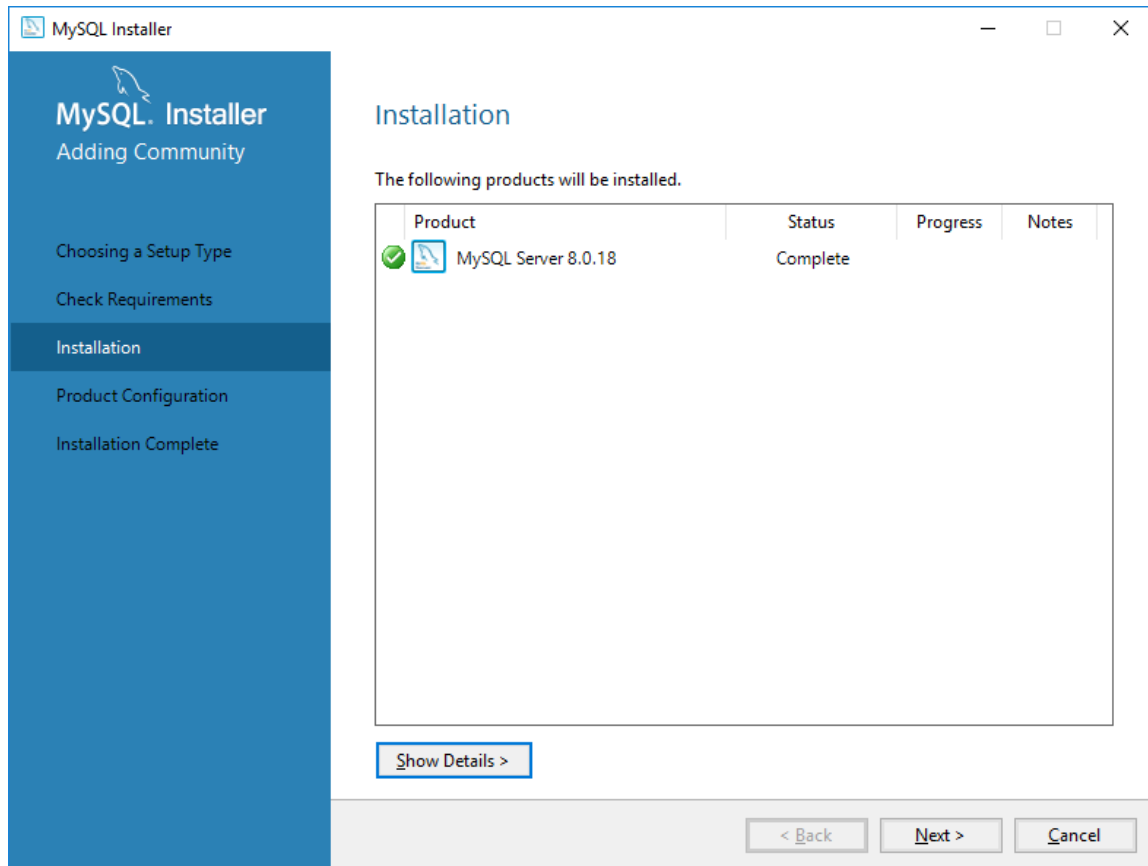
f. Click "Execute" for installing MySQL server.



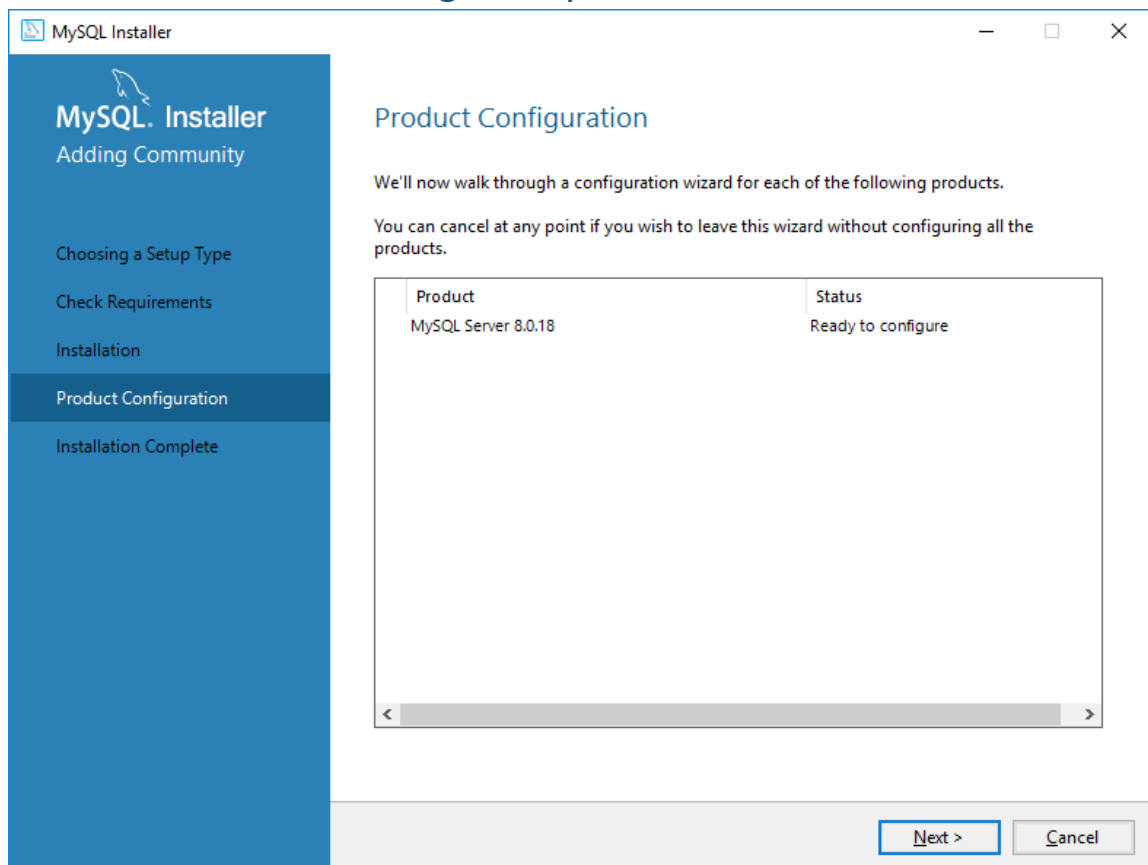
g. Installing process.



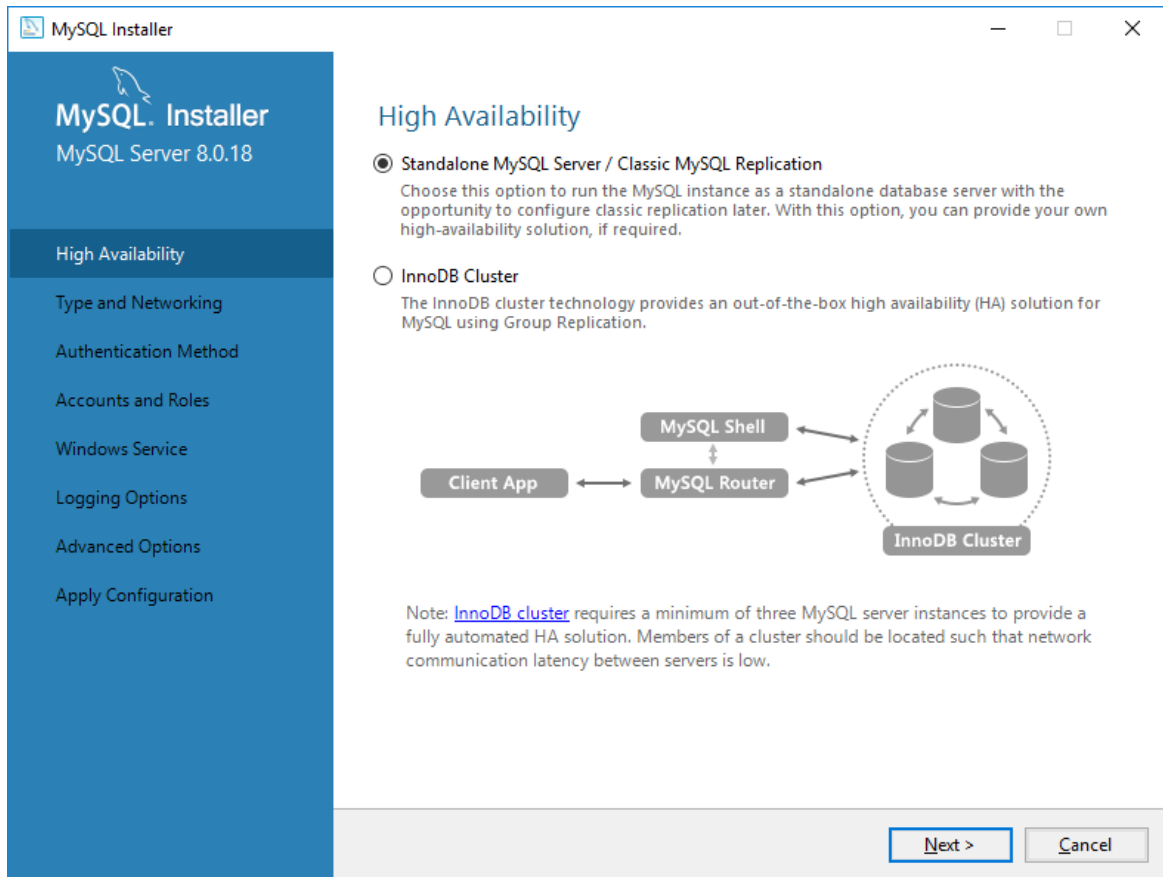
h. Installing completed, click “Next”.



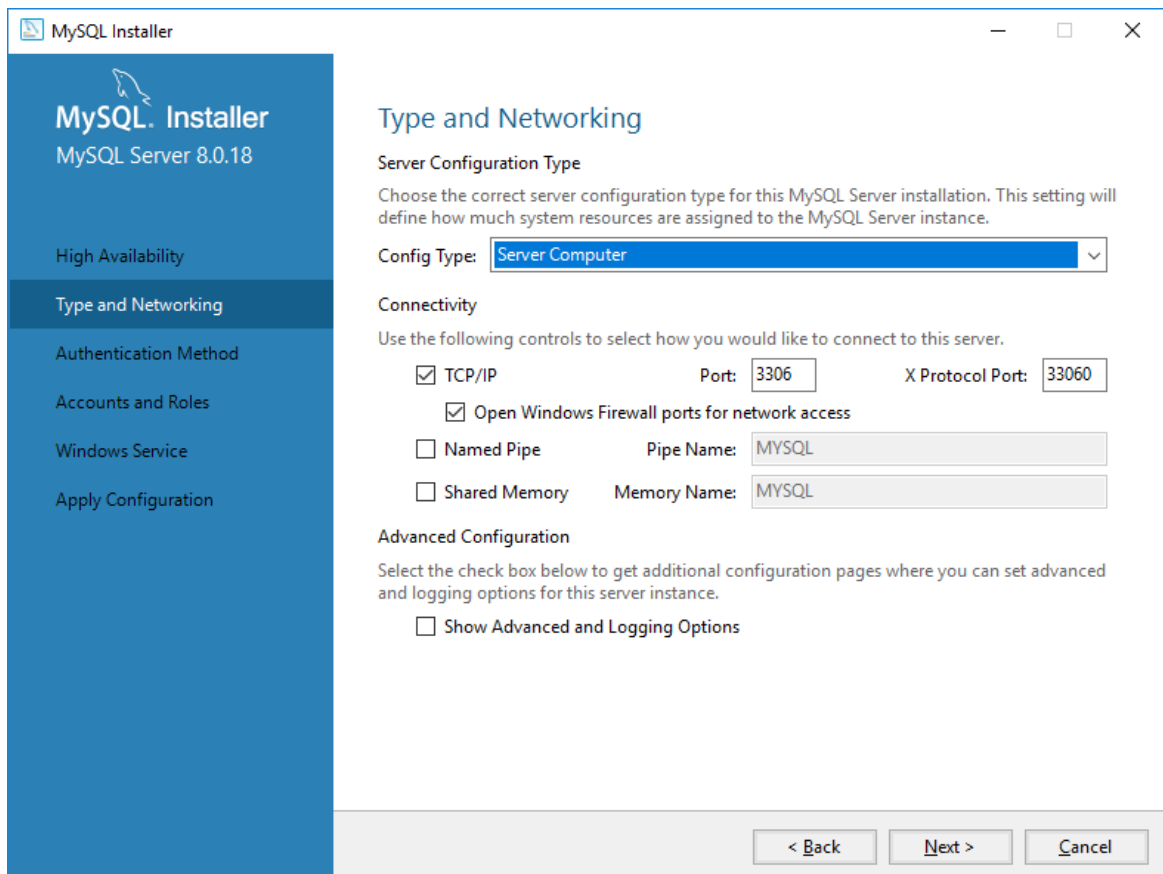
i. Click “Next” for configure MySQL server.



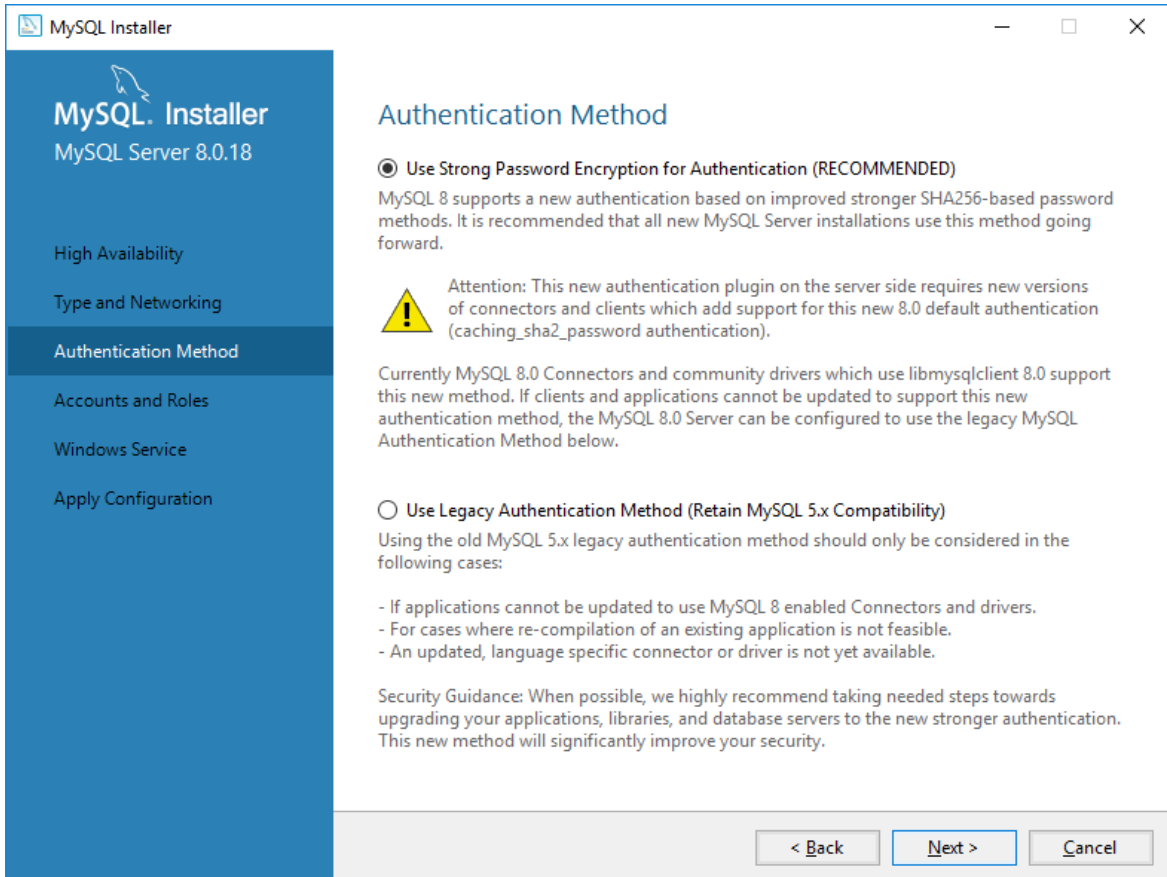
j. Select “Standalone MySQL server” and click “Next”.



k. Select “Config Type” and change port (if it's necessary).



I. Select authentication method.



The screenshot shows the 'Authentication Method' screen in the MySQL Installer. The left sidebar contains navigation options: High Availability, Type and Networking, Authentication Method (selected), Accounts and Roles, Windows Service, and Apply Configuration. The main content area is titled 'Authentication Method' and features two radio button options. The first option, 'Use Strong Password Encryption for Authentication (RECOMMENDED)', is selected. Below it, a yellow warning icon is accompanied by text explaining that MySQL 8's new authentication method requires updated connectors and clients. A second option, 'Use Legacy Authentication Method (Retain MySQL 5.x Compatibility)', is unselected. Below this, text explains when to use the legacy method and lists three cases: applications that cannot be updated, re-compilation is not feasible, or connectors/drivers are not yet available. A 'Security Guidance' section at the bottom recommends upgrading applications, libraries, and database servers to the new method for improved security. At the bottom right, there are three buttons: '< Back', 'Next >', and 'Cancel'.

MySQL Installer

MySQL Server 8.0.18

High Availability

Type and Networking

Authentication Method

Accounts and Roles


Windows Service

Apply Configuration

Authentication Method

Use Strong Password Encryption for Authentication (RECOMMENDED)

MySQL 8 supports a new authentication based on improved stronger SHA256-based password methods. It is recommended that all new MySQL Server installations use this method going forward.

 Attention: This new authentication plugin on the server side requires new versions of connectors and clients which add support for this new 8.0 default authentication (caching_sha2_password authentication).

Currently MySQL 8.0 Connectors and community drivers which use libmysqlclient 8.0 support this new method. If clients and applications cannot be updated to support this new authentication method, the MySQL 8.0 Server can be configured to use the legacy MySQL Authentication Method below.

Use Legacy Authentication Method (Retain MySQL 5.x Compatibility)

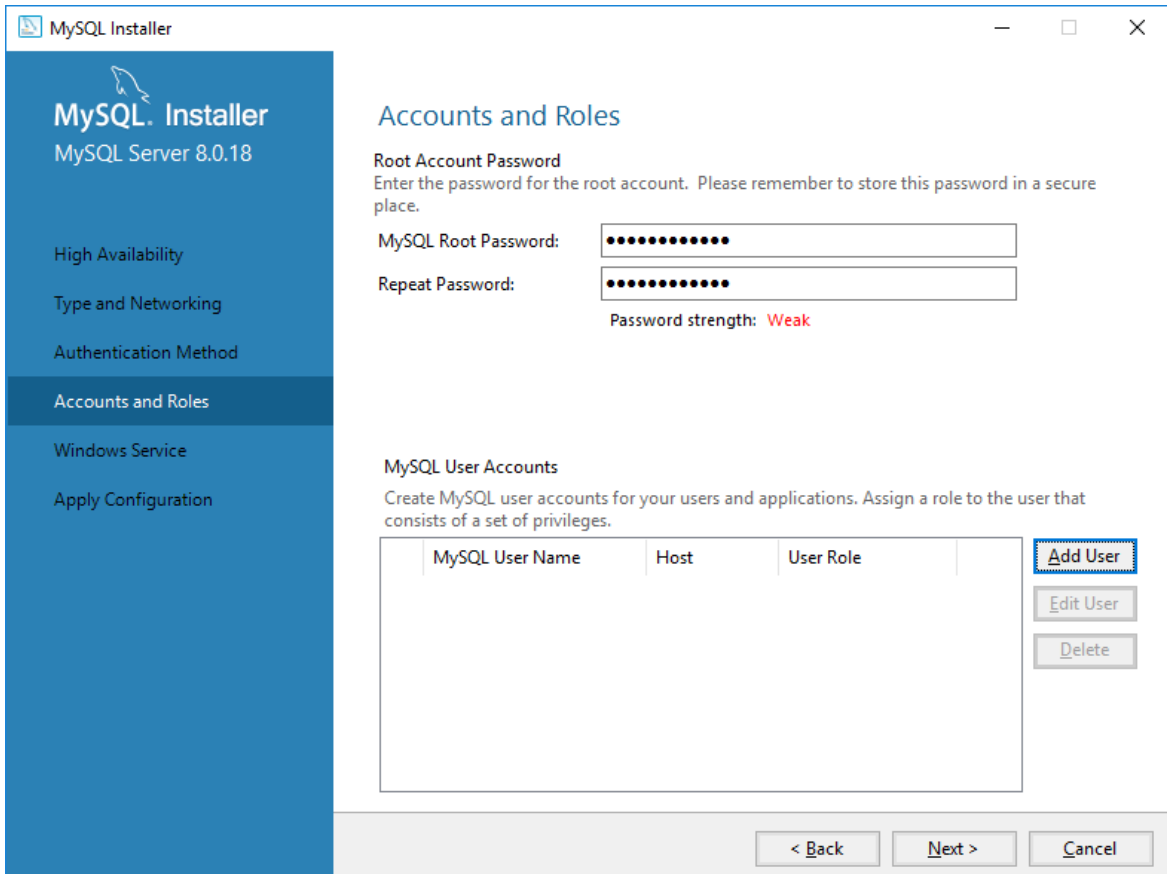
Using the old MySQL 5.x legacy authentication method should only be considered in the following cases:

- If applications cannot be updated to use MySQL 8 enabled Connectors and drivers.
- For cases where re-compilation of an existing application is not feasible.
- An updated, language specific connector or driver is not yet available.

Security Guidance: When possible, we highly recommend taking needed steps towards upgrading your applications, libraries, and database servers to the new stronger authentication. This new method will significantly improve your security.

< Back Next > Cancel

m. Create password for ROOT user.



The screenshot shows the 'Accounts and Roles' screen in the MySQL Installer. The left sidebar is the same as in the previous screen, with 'Accounts and Roles' now selected. The main content area is titled 'Accounts and Roles' and has a sub-section 'Root Account Password'. It prompts the user to enter a password for the root account and provides two input fields: 'MySQL Root Password' and 'Repeat Password', both filled with dots. Below these fields, the password strength is indicated as 'Weak' in red text. A second sub-section, 'MySQL User Accounts', instructs the user to create user accounts and assign roles. Below this is a table with columns for 'MySQL User Name', 'Host', and 'User Role'. To the right of the table are three buttons: 'Add User' (highlighted with a red box), 'Edit User', and 'Delete'. At the bottom right, there are three buttons: '< Back', 'Next >', and 'Cancel'.

MySQL Installer

MySQL Server 8.0.18

High Availability

Type and Networking

Authentication Method

Accounts and Roles

Windows Service

Apply Configuration

Accounts and Roles

Root Account Password
Enter the password for the root account. Please remember to store this password in a secure place.

MySQL Root Password:

Repeat Password:

Password strength: **Weak**

MySQL User Accounts
Create MySQL user accounts for your users and applications. Assign a role to the user that consists of a set of privileges.

MySQL User Name	Host	User Role
-----------------	------	-----------

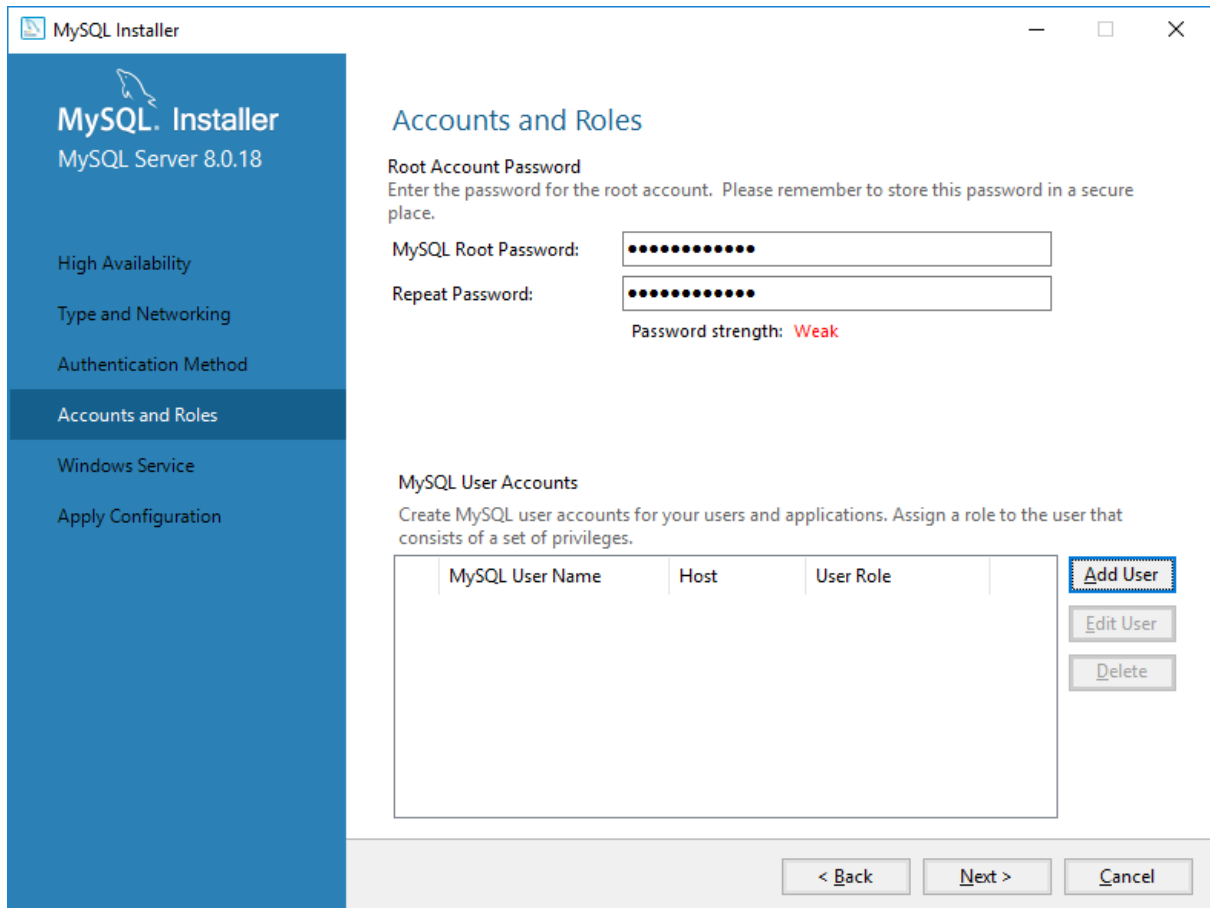
Add User

Edit User

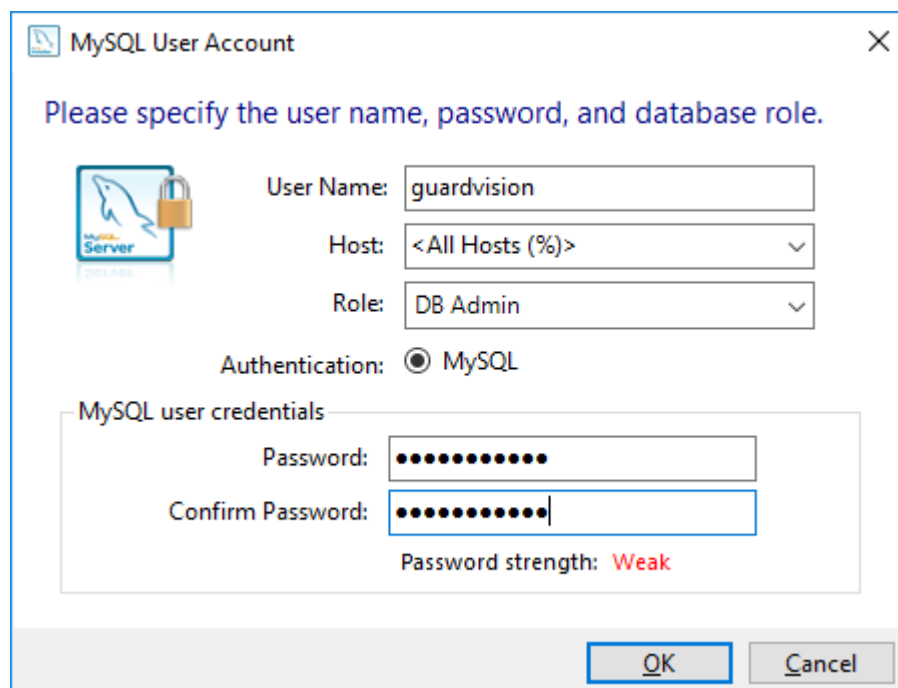
Delete

< Back Next > Cancel

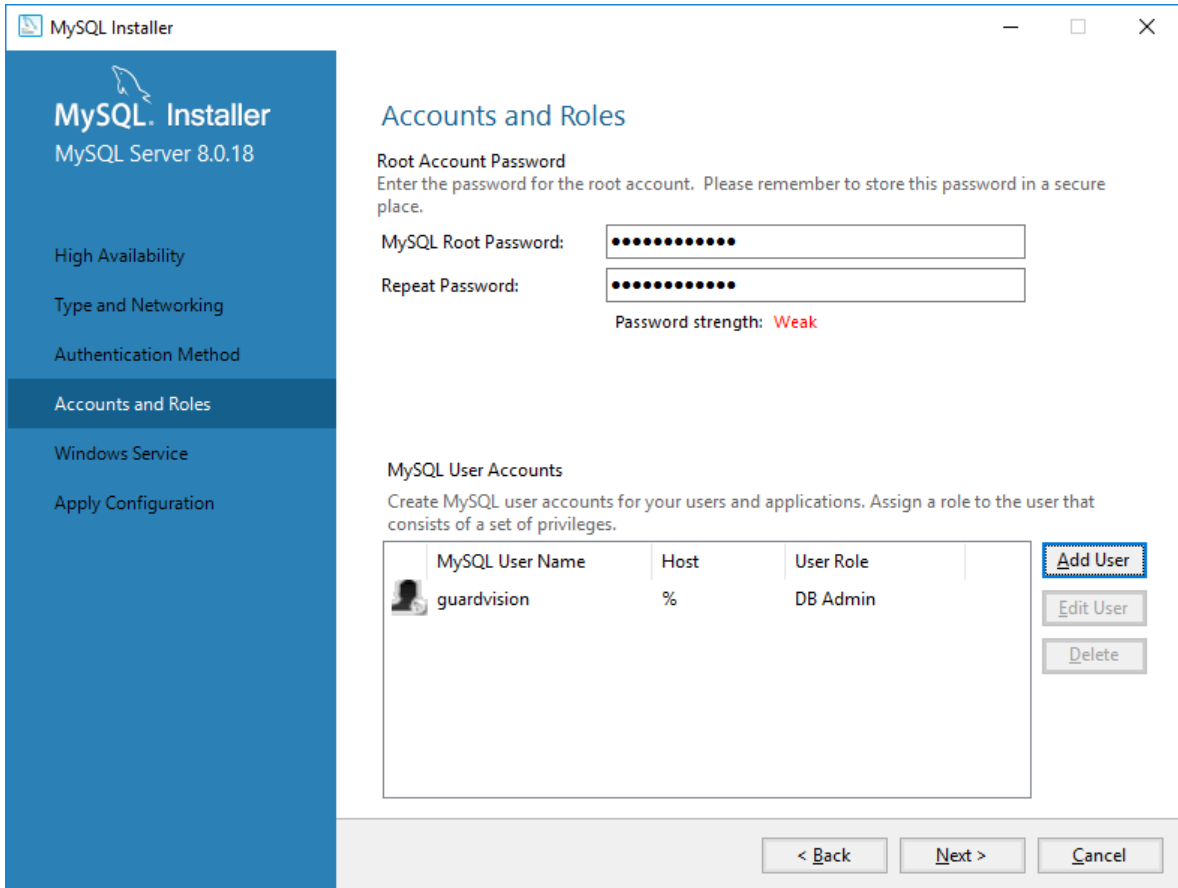
n. Click “Add User” for creating new user for Guard Vision software.



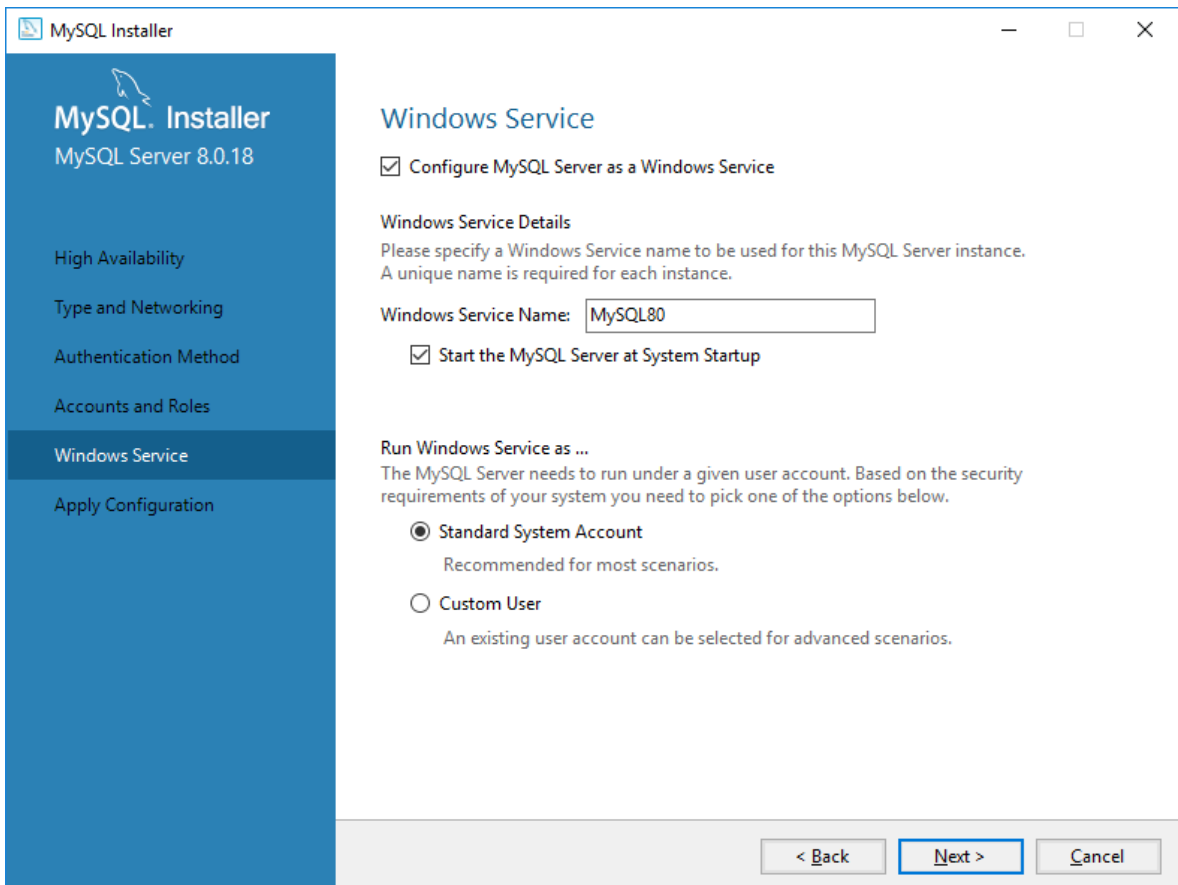
o. Create user “guardvision” with password “GuardVision”, change role to “DB Admin” and click “OK”.



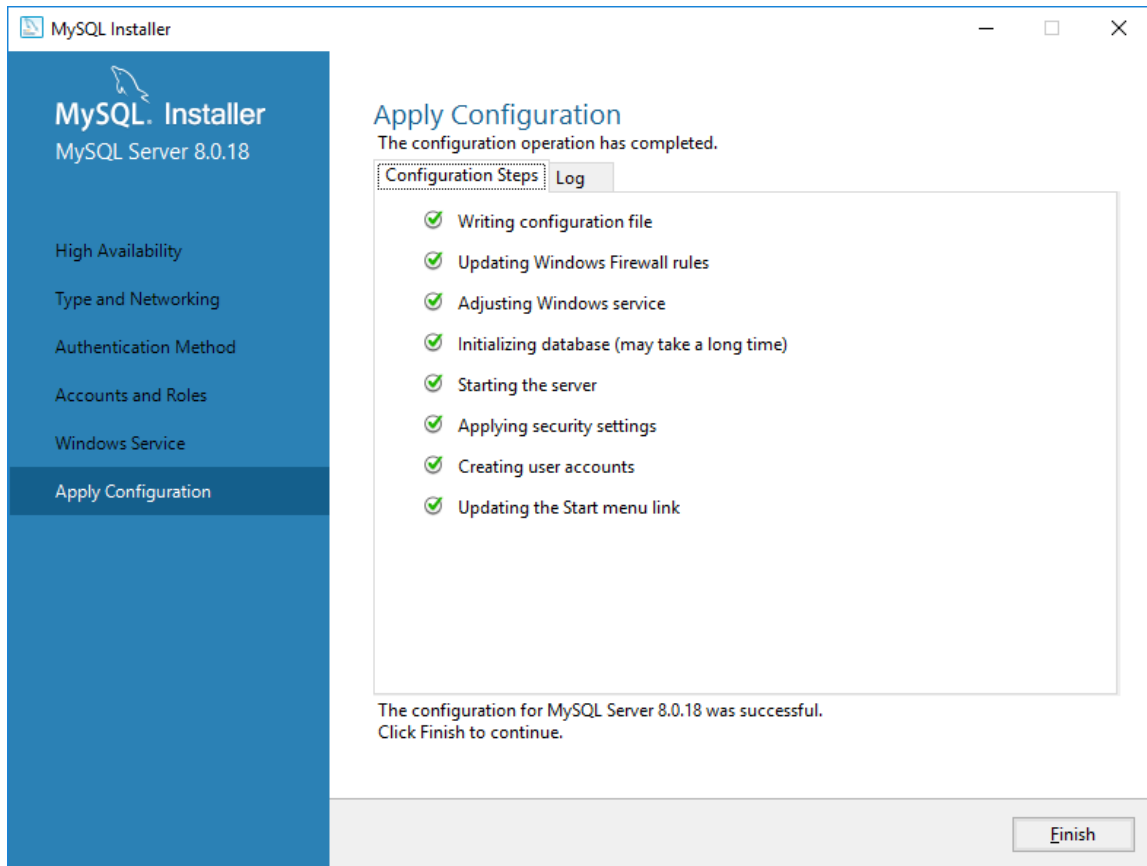
p. Click "Next".



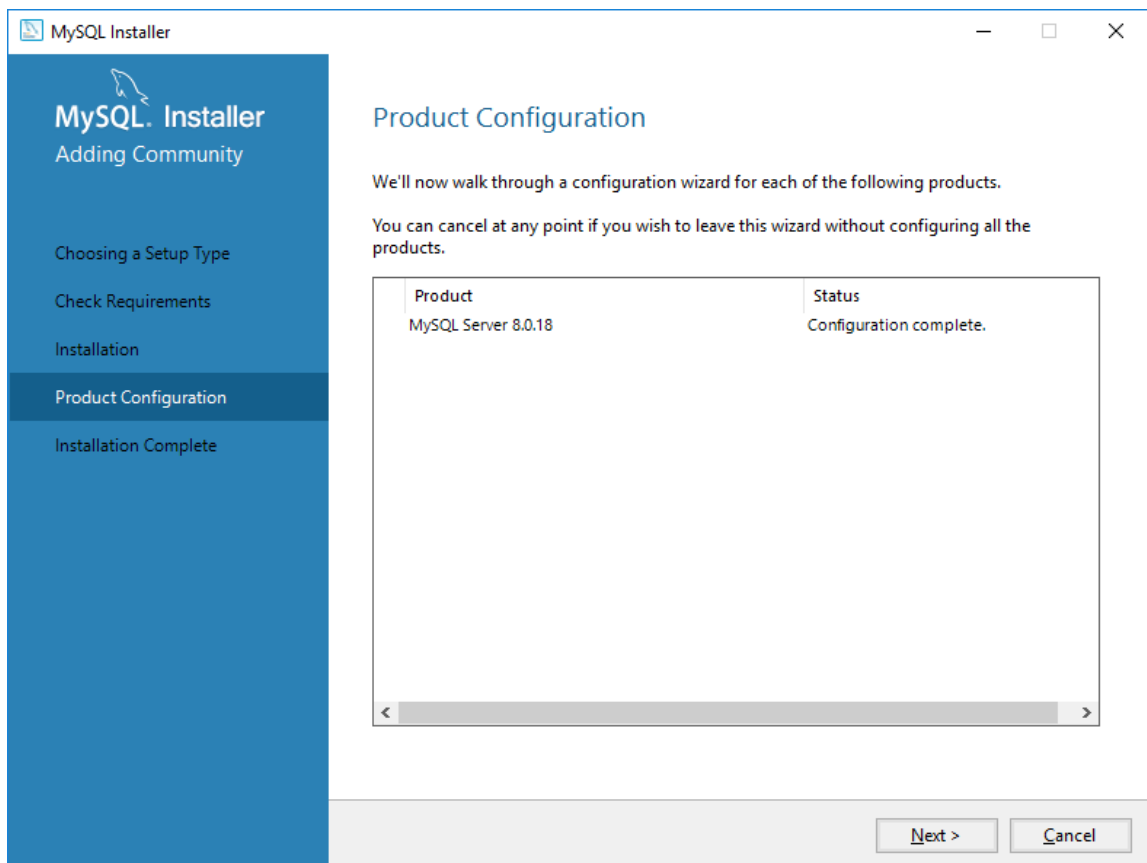
r. Change service name if it's necessary.



s. Click “Finish” for complete installation.



t. Click “Next”.



u. Done! Click “Finish”.

